

BIOSCREENER

ADVANCED SOFTWARE
FOR BIOSCREEN-C

BioScreener is newly designed software for use with Bioscreen C. It is efficient, easy to use, and enhances system capabilities for optimum performance. BioScreener can report measurements of up to 200 sample wells at up to three different wavelengths in one test run.

Experiments can run from several hours to several months. During the experiment, absorbance and temperature data are displayed in real time.

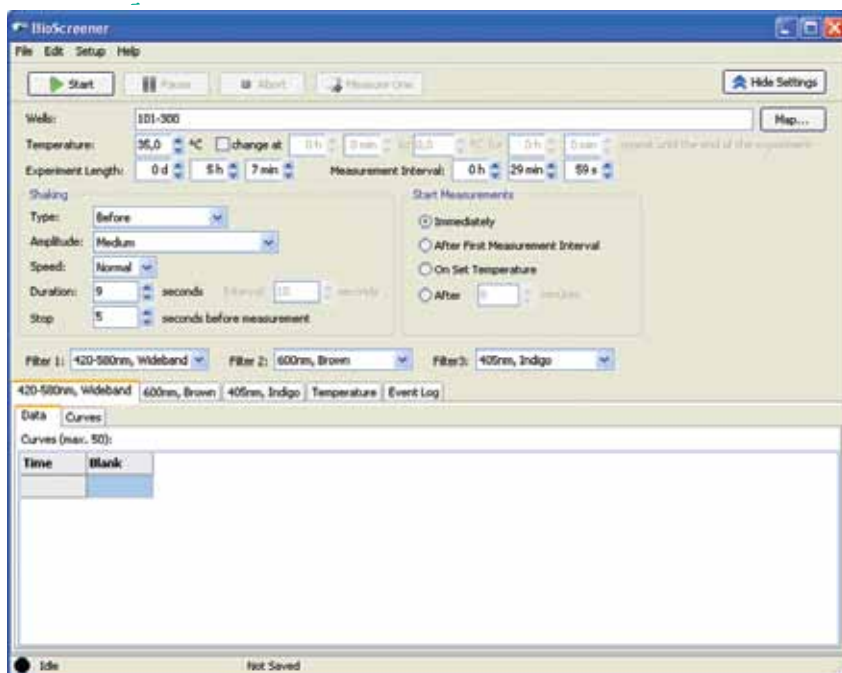


BioScreener provides important new user benefits:

- View growth curves in real time during the experiment
- Pause the experiment to change experimental conditions
- Select up to three different filters to use during the run
- Zoom in to magnify selected areas of the graph
- Safety feature prevents damage to instrument lenses.

Experimental results are stored in special files that include settings, measurement data, and all events that occurred during the experiment. These results may be exported to either Text, CSV, XLS or HTML formats.

Bioscreen C automated growth curve analysis system is a computer-controlled incubator / shaker / reading system offering outstanding accuracy, precision, and ease of use. Its patented incubator system can maintain temperature within +/- 0.1 degrees throughout the run. It is equipped with eight filters including a wideband filter for use when measuring turbidity. The reader measures OD values which are plotted against time to produce growth curves. Results are exported to produce tables and graphs of the run.



Menu Screen

BioScreener allows complete experiment control and analysis.

Automatic functions before the run:

- Detection & selection of COM-port
- Cassette lock alert stops run to avoid damage

Selections when you set up the run:

- When experiment is started (4 options)
- Which wells to read (random access capability)
- What filters to use (up to 3)
- Temperatures for run (one or two, 0 to 59 degrees)
- Duration of experiment (up to 730 days)
- Measurement intervals selected by user

Shaking options:

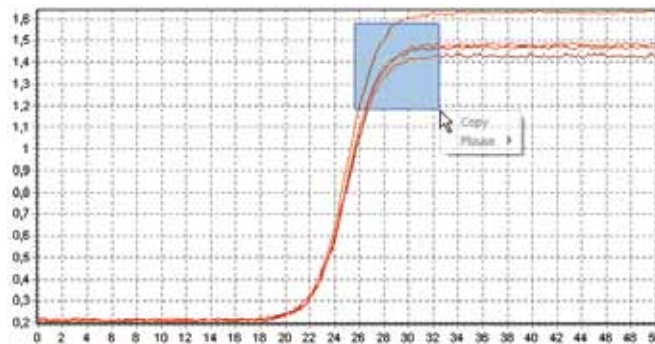
- Four levels of amplitude
- Three speed levels
- Select duration and start/stop times

During the run:

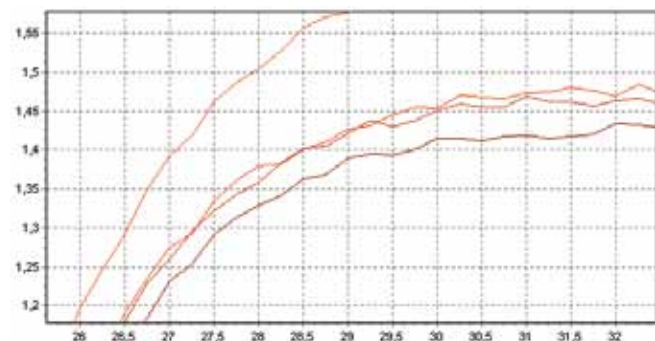
- Take readings during the run
- Change duration of experiment
- Curve pages show live growth curves
- Up to 50 wells may be displayed
- Zoom function magnifies selected area of graph

Display & Analysis of Results:

- Temperature recorded for top & bottom of cassette
- Special actions recorded in an event log
- Export results to either Text, CSV, XLS, or HTML format
- Data page displays wells in columns, time in rows
- One page of results for each selected filter



User Selects Area to Examine



Zoom Function Enlarges View of Area

Time	Blank	101	121	125	126	127	141	166	172	175
00:00:00	0,000	0,218	0,219	0,218	0,217	0,215	0,206	0,220	0,213	0,210
00:00:15	0,000	0,212	0,220	0,219	0,207	0,220	0,211	0,201	0,211	0,201
00:00:30	0,000	0,211	0,220	0,219	0,212	0,219	0,209	0,209	0,215	0,217
00:00:45	0,000	0,210	0,216	0,205	0,210	0,203	0,200	0,201	0,201	0,208
00:01:00	0,000	0,203	0,206	0,212	0,212	0,213	0,201	0,209	0,209	0,203
00:01:15	0,000	0,215	0,211	0,204	0,201	0,218	0,214	0,204	0,204	0,208
00:01:30	0,000	0,213	0,210	0,204	0,218	0,209	0,205	0,213	0,213	0,211
00:01:45	0,000	0,208	0,201	0,217	0,214	0,217	0,217	0,204	0,218	0,214
00:02:00	0,000	0,217	0,217	0,203	0,201	0,219	0,203	0,218	0,208	0,217
00:02:15	0,000	0,210	0,203	0,211	0,216	0,219	0,203	0,216	0,218	0,210
00:02:30	0,000	0,204	0,208	0,207	0,201	0,208	0,200	0,215	0,207	0,208
00:02:45	0,000	0,211	0,210	0,220	0,214	0,220	0,215	0,203	0,207	0,216
00:03:00	0,000	0,217	0,214	0,219	0,201	0,211	0,200	0,213	0,216	0,201
00:03:15	0,000	0,204	0,200	0,219	0,208	0,209	0,212	0,201	0,212	0,201
00:03:30	0,000	0,205	0,206	0,218	0,205	0,218	0,215	0,206	0,217	0,217
00:03:45	0,000	0,206	0,214	0,219	0,203	0,200	0,217	0,213	0,208	0,219

Results Table

Requirements:

Windows 2000, XP, Vista, or 7. Disc space of 10 MB + 1 GB for data.

RS 232 serial port (UART 16550A or better) or USB 2.0 based USB to RS 232 serial port adapter and installed driver software, or network serial port.

Growth Curves USA
Automation Tools for Microbiology

11 Blueberry Ct.
Piscataway, NJ 08854
Phone: 732-457-9070
Fax: 732-457-0908
e-mail: bioscreensales@aol.com
www.growthcurvesusa.com